

CERTIFICATE OF LOCATION OF GOVERNMENT CORNER

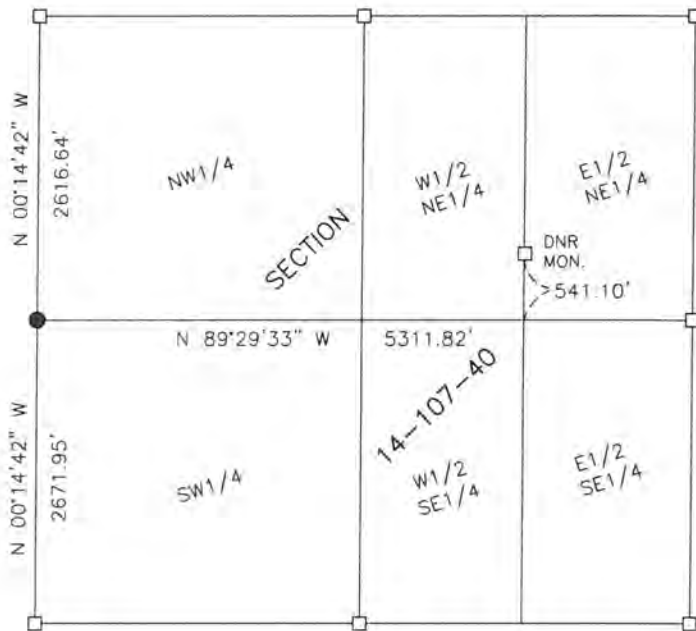
EAST QUARTER Corner of Section 15, Township 107, Range 40, 5TH P.M.

STATE OF MINNESOTA, County of MURRAY

At the corner location shown on the sketch:

- On _____ found a _____
- DATE
- left monument as found, lowered monument, removed monument (explain)
- On 07/18/2017 placed a 5/8" IRON WITH SEAL #43844.
- DATE

SKETCH OF REFERENCE TIES



Minnesota State Plane Coordinate System, County Datum NAD83 (1996)

Murray

N: 182032.363
E: 537767.143

Statement of evidence relative to this corner location is on back of page.

I hereby certify that this document and the data contained herein was prepared by me or under my direct supervision

[Signature] 9/18/17
SIGNATURE DATE

Registration No. 43844

- Land Surveyor, Professional Engineer
 County Surveyor, County Engineer

STATE OF MINNESOTA, }
COUNTY OF MURRAY, } ss.

I hereby certify that the within Instrument was filed in this office for record on the 12TH day of OCTOBER A.D. 20 17 at 11:00 o'clock A. M, and was duly recorded as Document No. _____

[Signature]
County Recorder

Statement of Evidence

In 1861, L. Brockmann did the original subdivision of the township.

On July 18, 2017, Bueltel-Moseng Land Surveying set a 5/8" iron with seal #43844 by projecting line from the northwest corner of the East Half of the Northeast Quarter of Section 14-107-40 through a found monument on the west line of said East Half and measuring the recorded distance of 541.10 feet as shown on a previous Minnesota Department of Natural Resources survey dated December 13, 1971. We then projected line from the East Quarter corner through said point to its intersection with a direct line between the northwest corner and southwest corner of said Section 14-107-40. This position fits the occupation lines to the east and south.